



EcoClean Technology

Rocla
Water Quality

CleansAll[®]
GROSS POLLUTANT TRAP
EcoClean Technology Sdn. Bhd.



EcoClean Technology

Trouble-free pollutant control

- Excellent capture of gross pollutants
- Excellent capture of oils
- High sediment removal
- Low head loss
- Retention of pollutants during peak flows
- Effective overflow system for larger flows
- Cost effective maintenance
- Does not rely on special hydraulic conditions
- Durable precast construction
- No moving parts

Quick onsite assembly

The **Rocla CleansAll®** GPT is designed for ease of assembly. The unit is made up of basic 'building block' components that are craned into an excavated pit and bolted together.

The basic elements of the trap are made from high strength steel-reinforced concrete. There are no moving parts. The sturdy collection baskets are manufactured from stainless steel. A long, reliable service life is assured by the solid construction, high quality components and the simplicity of the design.

Low cost, low maintenance

On a whole-of-life cost comparison, the **Rocla CleansAll®** GPT provides one of the most cost-effective methods of controlling stormwater pollution. Ease of maintenance has made the **Rocla CleansAll®** GPT a fundamental part of stormwater quality throughout Australia.



Control of Stormwater

Effective removal of litter, sediments and oil from

Long service life

Engineered for long service life, the units can be easily cleaned by regular waste disposal services. No climbing into confined spaces. The removable basket is lifted out and emptied on to a truck. Quarter-size baskets are supplied with larger units for easy lifting using a standard truck-mounted crane.

High capture rates

Testing shows 100% of gross pollutants and oil, as well as approximately 70% of sediments are removed at the design treatment flow.

Low head loss

Head loss is comparable to a normal junction or easement pit.

Range of sizes

A large range of sizes is available for various pipe diameters and flow rates.

Testing

The **Rocla CleansAll®** Gross Pollutant Trap has been extensively tested to prove its performance characteristics.

Design assistance

The **Rocla CleansAll®** Gross Pollutant Trap can be customised to treat flow through box culverts, open channels and any high flow situation. Rocla can provide assistance in adapting the design for these applications.

Rocla reliability

Fully supported by Rocla technical expertise and on-site assistance. Rocla is a Quality Endorsed company with accreditation to ISO 9001.

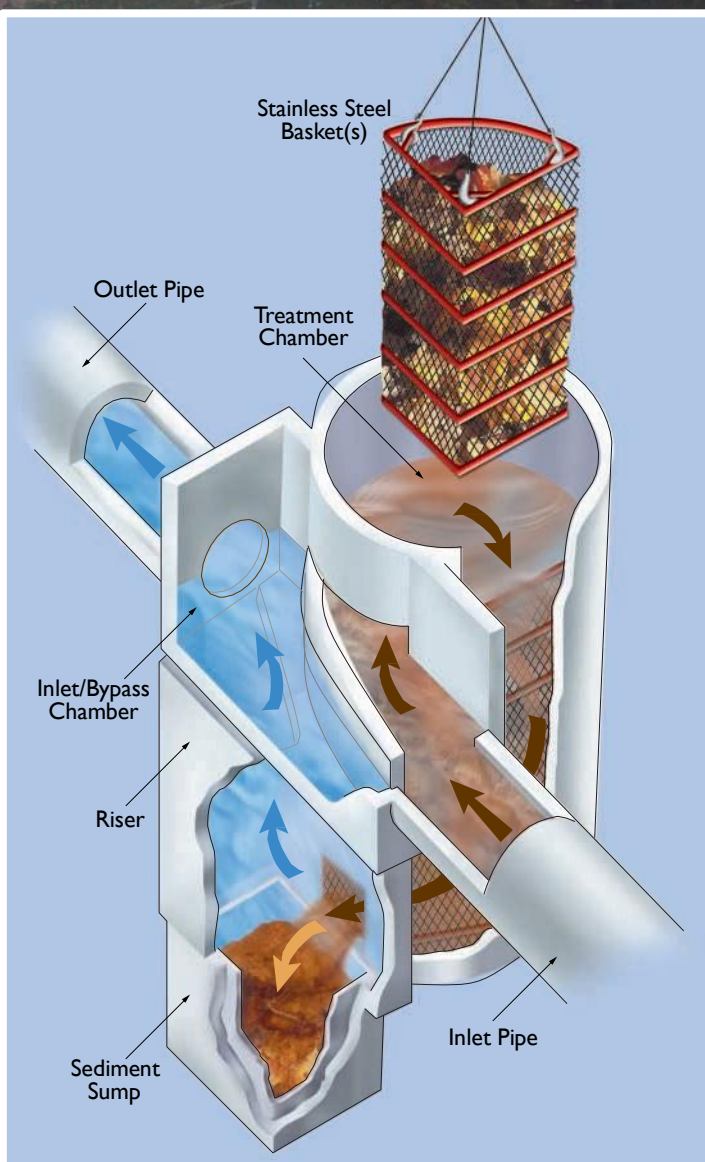
Pollution



Stormwater and wastewater

Dramatic demonstration of the effectiveness of the Rocla CleansAll® gross pollutant trap. This exposed installation features a Rocla CleansAll® GPT at the end of an open channel. Stormwater run-off enters the channel at left, polluted with litter and large quantities of floating plants released from upstream detention ponds.

A weir system diverts the stormwater into the GPT which captures all gross pollutants and discharges clean water into the creek on the right.



Simple, reliable operation

Inlet

Stormwater enters the inlet chamber, where it is diverted by a by-pass weir into the treatment chamber.

Treatment

Oils and floating pollutants are trapped in the treatment chamber. All remaining gross pollutants are retained in the baskets.

Sediment sump

Cleansed stormwater passes into the bottom compartment of the diversion chamber, where sediments settle because of the reduced flow velocity.

Outlet

The cleansed stormwater then leaves the device by passing up and through the by-pass channel aperture and into the stormwater system.

Overflow

During large storm events, flow is allowed to overtop the weir in the inlet channel without disturbing previously captured materials.



CleansAll®

GROSS POLLUTANT TRAP

The Pollution Watchdog

Once installed, the **Rocla CleansAll®** Gross Pollutant Trap becomes an indispensable management tool for formulating pollution control strategies.

GPTs are an excellent source of data for monitoring upstream activities and managing pollution of catchments. Analysis of pollutants provides a range of useful indicators, such as:

Sediment load: Indicates road works, removal of pipe bedding, pipe ingress, construction activity.

Fuel or oil load: Potentially poor industrial pollution management or dumping of contaminants.

Organic load: An indicator of street sweeping or maintenance effectiveness.

Litter load: Useful in identifying high litter generating activities or zones within the catchment.

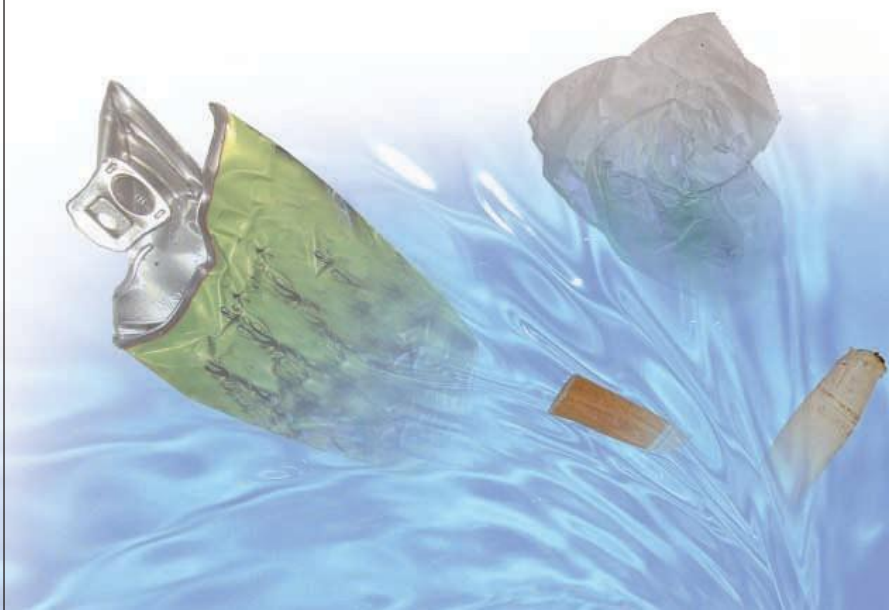
Unusual pollutants: If the pollutant trap is collecting something other than what is expected, further investigation may be required. For example, a high load of decomposing vegetable matter may indicate dumping of foodstuffs at a particular location.

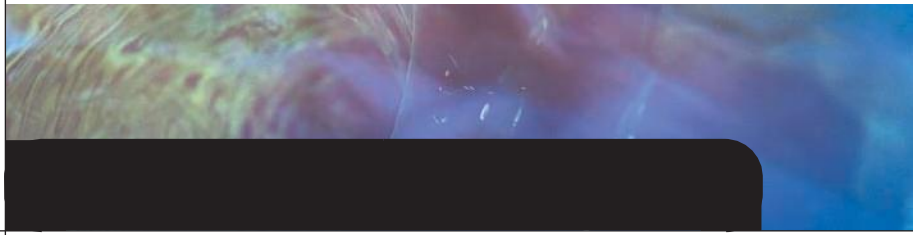
Stemming the rising tide of pollution

Rocla CleansAll® Gross Pollutant Traps are the ideal defence against the wide range of pollutant generators that have developed over recent decades. The increase in dwellings, in commercial and industrial activity - and ever-spreading impervious zones such as car parks and road reserves - have led to a huge increase in litter, sediment and oil loads being collected by stormwater.

Keeping our waterways clean

The **Rocla CleansAll®** Gross Pollutant Trap provides simple, effective removal of gross pollutants as well as suspended solids and oils. Designed to treat large flows in-line or end-of-line, the **Rocla CleansAll®** GPT protects the environment by removing gross pollutants before they reach the ocean, waterways or wetlands.





Sydney
Dapto
Dubbo
Newcastle
Glen Innes
Grafton
Canberra
Melbourne
Avoca
Traralgon
Wodonga
Brisbane
Toowoomba
Mackay
Cairns
Adelaide
Perth

CleansAll[®]
GROSS POLLUTANT TRAP



EcoClean Technology

EcoClean Technology Sdn Bhd

12A-18, Wisma Zelan,
Jalan Tasik Permaisuri 2,
Bandar Tun Razak,
56000 Kuala Lumpur,
Malaysia

Tel: +60(3) 9171.8160
Fax: +60(3) 9171.9160

Email:
sales@ecoclean.com.my

The contents of this brochure are copyright and may not be reproduced in any form without the prior written consent of Rocla Pty Limited. Recommendations and advice regarding the use of the product described in this brochure are to be taken as a guide only, and are given without responsibility on the part of the company or its employees. Individual designs involving the use of this product should be undertaken by a competent engineer.

© Trade marks of Rocla Pty Limited ABN 31 000 032 191.
Trading as Rocla Pipeline Products
A member of the Amatek Group.
© Rocla Pty Limited 2002

